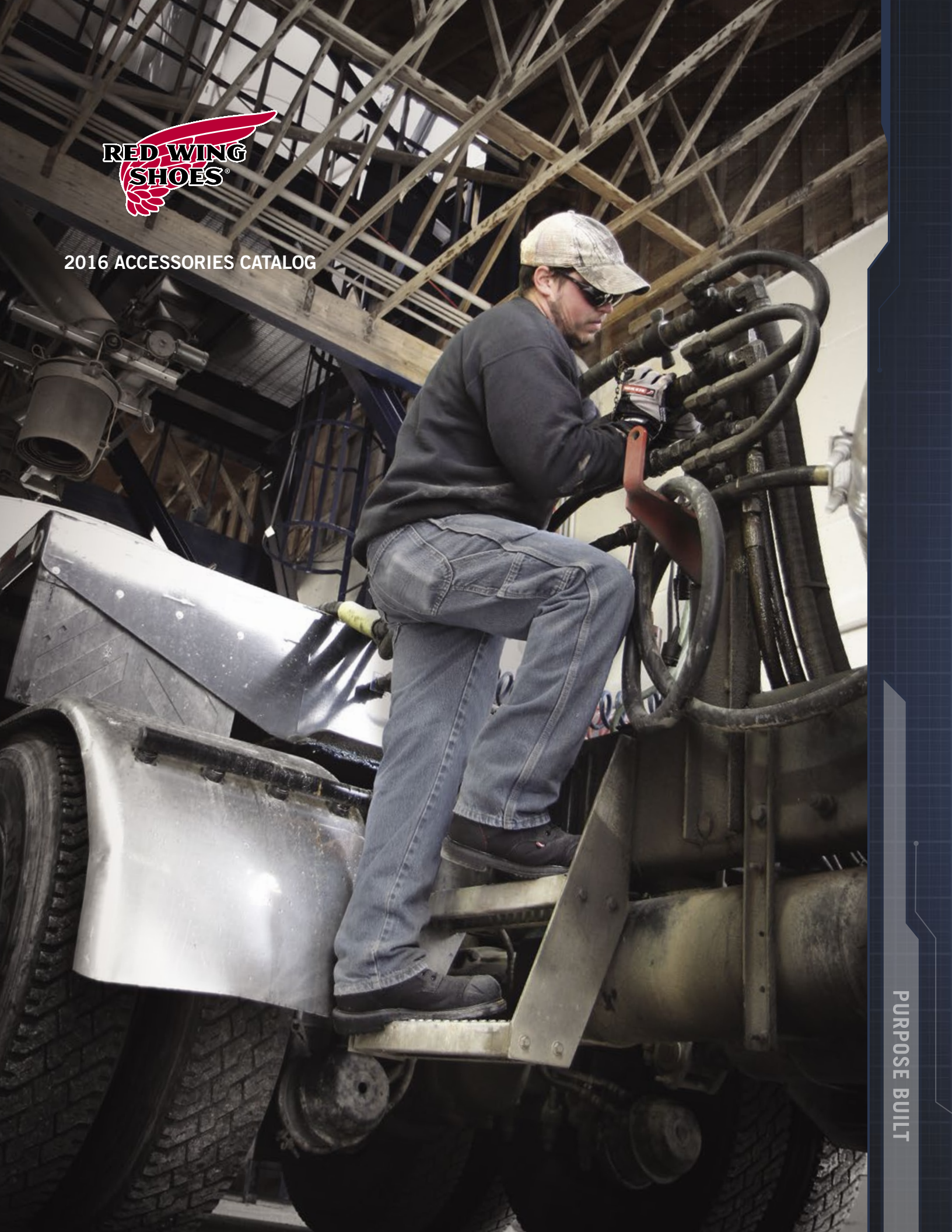




2016 ACCESSORIES CATALOG



PURPOSE BUILT



WELCOME to the Red Wing Accessories Catalog. Red Wing accessory products are a great extension of Red Wing footwear to enhance your customer's experience and to grow profits in your store. Red Wing ensures that you have the right products to sell and use.



THE ULTIMATE FIT SYSTEM HELPS YOU SATISFY CUSTOMERS AND PROFIT FROM ADDITIONAL SALES.

Purpose-built work boots are best complemented with purpose-built accessories like socks, footbeds and care products. Red Wing accessories provide customers additional support, cushioning and underfoot comfort, while extending the life of their boots.



1 Footwear



2 Footbeds



3 Socks



4 Care Products

THE RED WING ULTIMATE FIT SYSTEM DELIVERS PROTECTION, COMFORT AND DURABILITY.

This four-step system equips customers with the tools they need to feel both comfortable and protected in their footwear. Red Wing doesn't just sell boots, we match customer needs with the best solutions through the Ultimate Fit System.

SLIPPERS



NEW styles, more comfort in men's and women's slippers.

pg. 22

SOCKS



An added selection of Safety Toe Socks.

pg. 9

CARE PRODUCTS



Smaller sizes, bigger selection in our NaturSeal™ line.

pg. 18

ACCESSORIES

Footbeds	4-7
Orthotic	5
Comfort	6
Original Equipment	6-7
Socks	8-15
Wool	9-10
Acrylic	11-12
Cotton	13-14
Specialty	15

Clean and Care	16-20
Clean	17
Condition	18-19
Protect	20
Headwear	21
Slippers	22-23
Men's	22
Women's	23

Leather Goods	24-28
Belts	24-25
Gloves	26-27
Wallets and Cases	28
Miscellaneous	29-32

REFERENCE

Merchandising	33
Warranty / Ordering	34
Index	35

**BRAND NEW WAYS
TO WEAR RED WING**
WE'RE ADDING A WHOLE NEW
LINE OF PURPOSE-BUILT GEAR.



COOLING PRODUCTS



A great new selection
of work wear that can
really take the heat off.

pg. 30



HIGH VISIBILITY WORK SAFETY VESTS

New high visibility work safety vests you
can count on to stay safe on the job site.

pg. 29



FOOTBEDS

These orthotic footbeds are designed by podiatrists and help relieve heel and arch pain. Therapeutic shell for heel and arch support. Stabilizing heel cradle to protect the heel during landing. Resilient foam core and EVA sleeve for long-lasting cushioning of the entire foot. Friction reducing top-coated fabric with anti-microbial agent to control odor.



Aggressive arch provides ultimate support & control

Deep heel cup helps alignment upon heel strike

Variable density EVA base molds to your foot

Poron® middle layer, offering exceptional heel-to-toe support

Moisture managing fabric cover

Poron® cushioning provides maximum protection against shock

CUSTOM COMFORT MOLDABLE by SOLE

96386

Sizes	Men's	Women's
3		4½-6
4		5½-6
5		6½-7
6	5½-6	7½-8
7	6½-7	8½-9
8	7½-8	9½-10
9	8½-9	10½-11
10	9½-11	11½-12
11	10½-11	13
12	11½-12	14
13	12½-13	15
14	14	
15	15	
16	16	

Simply heat the footbed in a regular oven, place it in the footwear, and step in for the perfect fit. Your customers will love the customization.



Powerstep

Stabilizing heel cradle protects the heel during landing

Therapeutic shell supports heel and arch

Resilient core foam and EVA sleeve for long lasting cushioning of the entire foot

Friction reducing top coated fabric with anti-microbial agent to control odor



Wide fit accommodates EEE to 6E



RW REVOLUTION by POWERSTEP®

96323: Black
96336: WIDE Burgundy

Sizes	Men's	Women's
3		5-5½
4		6-6½
5		7-5½
6	6-6½	8-8½
7	7-7½	9-9½
8	8-8½	10-10½
9	9-9½	11-11½
10	10-10½	12-12½
11	11-11½	
12	12-13½	
14	14-14½	

ORTHOTIC **COMFORT** **ORIGINAL EQUIPMENT**

Red Wing footbeds have been organized into three functional categories: Orthotic, Comfort and Original Equipment. Each category is color-coded and identified in the catalog by category.



ORTHOTIC

RED WING ORTHOTIC FOOTBEDS are designed to deliver superior comfort, support and stability. This footbed group features black packaging that states ORTHOTIC FOOTBEDS on the front, so customers can select the correct purpose-built footbed for their needs.

ORTHOTIC EVA SPORT



96334

- Lightweight EVA base in Powerstep® mold
- Deep heel cup provides stability
- Contoured arch provides support
- Poron® cushioning provides shock absorption
- Black military grade fabric covering

Sizes	Men's	Women's
6	6-6½	8-8½
7	7-7½	9-9½
8	8-8½	10-10½
9	9-9½	11-11½
10	10-10½	12-12½
11	11-11½	
12	12-12½	
13	13-13½	
14	14-14½	

ORTHOTIC MULTICORK WALKER



96335

- Dense multicork base in Powerstep® mold
- Deep heel cup provides stability
- Contoured arch provides support
- Poron® cushioning provides shock absorption
- Black military grade fabric covering

Sizes	Men's	Women's
6	6-6½	8-8½
7	7-7½	9-9½
8	8-8½	10-10½
9	9-9½	11-11½
10	10-10½	12-12½
11	11-11½	
12	12-12½	
13	13-13½	
14	14-14½	



COMFORT

COMFORT FOOTBEDS are designed to deliver optimum comfort and performance. This footbed group features red packaging that states COMFORT FOOTBEDS on the front, so customers can select the correct purpose-built footbed for their needs.



FLAT COMFORT

96327

- Impact Poron® cushioning for improved shock attenuation
- Anti-microbial friction free fabric covering

Sizes: 6, 8, 10, 12, 14



TOTAL CONTACT

96322

- Extremely lightweight and comfortable

Sizes: 6, 8, 10, 12, 14



ORIGINAL EQUIPMENT

ORIGINAL EQUIPMENT FOOTBEDS Red Wing OEM footbeds provide extra cushioning and arch support. They also help adjust the fit and comfort of customer's footwear. These footbeds are designed to replace original footbeds in Red Wing footwear. This footbed group features tan packaging that states ORIGINAL EQUIPMENT FOOTBEDS on the front, so customers can select the correct purpose-built footbed for their needs.



REDBED™

96388

- Four-layer construction for moisture management, impact absorption, stabilization and cushioned comfort
- Provides supportive instep columns

Sizes: 6, 7, 8, 9, 10, 11, 12, 13, 14, 15

COMFORTFORCE® LODEN GREEN



96368: Loden Green

- Unique Venturi Air perfs for air exchange
- Weave pattern to facilitate energy wave caused during walking
- Comfort curved ribbed arch lift
- Heel cup channels for ventilation
- CFP-5 shock attenuating elastomer pad
- Shock absorbing urethane

Sizes: 8, 10, 12, 14

COMFORTFORCE® BURNT SIENNA



96369: Burnt Sienna

- Unique Venturi Air perfs for air exchange
- Weave pattern to facilitate energy wave caused during walking
- Comfort curved ribbed arch lift
- Heel cup channels for ventilation
- CFP-5 shock attenuating elastomer pad
- Shock absorbing urethane

Sizes: 8, 10, 12, 14, 16

EAGLE KING TOE®



96347

- King Toe® provides ample toe room
- Polyurethane bottom supports the foot
- Poron® 4000 middle layer reduces shock and will not break down
- Contoured arch lift for added comfort
- Molded heel cup stabilizes the foot
- Nylon fabric lining for increased durability

Sizes: 7, 8, 9, 10, 11, 12, 13, 14, 15

EAGLE



96339

- Urethane bottom supports the foot
- Poron® 4000 middle layer won't break down
- Polypropylene lining keeps feet dry all day

Sizes: 8, 10, 12, 14

KING TOE®



96325

- Shock absorbing polyurethane
- Contoured arch lift provides comfort
- Heel cup provides stability
- Durable nylon fabric lining

Sizes: 6, 7, 8, 9, 10, 11, 12, 13, 14, 15, 16

POLYURETHANE



96324

- Shock absorbing polyurethane
- Contoured arch lift provides comfort
- Heel cup provides stability
- Durable nylon fabric lining

Sizes: 6, 7, 8, 9, 10, 11, 12, 13, 14, 15

FOAMTECH™ SD



96381

- Combines brushed polyester, open cell polyurethane and SD material composed of polyester and conductive fibers
 - Breathable static-dissipative footbed
- Will not make a non-SD shoe SD*

Sizes: 8, 10, 12, 14

POLYURETHANE SD



96326

- Shock absorbing polyurethane
 - Contoured arch lift provides comfort
 - Heel cup provides stability
 - Durable nylon fabric lining
- Will not make a non-SD shoe SD*

Sizes: 6, 7, 8, 9, 10, 11, 12, 13, 14, 15



SOCKS

WOOL

ACRYLIC

COTTON

SPECIALTY

Red Wing offers purpose-built socks, designed for today's workers. Strategic padding and reinforcement, as well as other innovative features, enhance footwear fit and comfort.

Purpose-built socks require packaging that communicates important features. In fact, our customer convenience packaging makes it easier for your customers to compare products and make informed choices. Not only does this sock packaging improve the presentation in your store, but they work together as a full unit or individually. And the packaging is constructed of durable card stock, allowing the product to hang uniformly and command attention.

The Red Wing Belt & Accessories Display (94343) can also be used to sell socks.

WOOL

The Wool category includes socks made of merino wool, worsted wool and other wool blends. Merino wool is known for its strength, warmth and extraordinary softness, while worsted wool is made with a complex process which produces a smooth, soft yarn with great durability.

SOCK SIZE CHART	
Men's	Women's
3-6	4-6.5
6-9	7-10
9-12	10-13
12-15	N/A

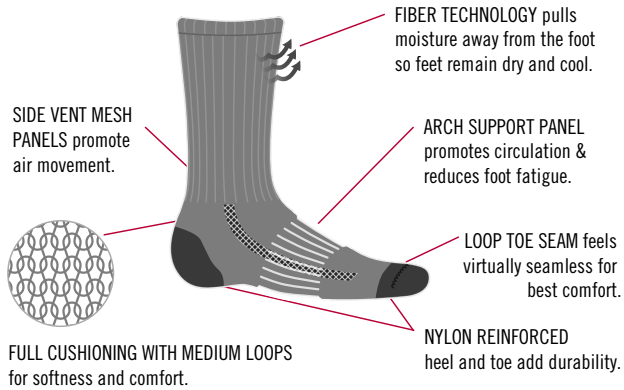
FOOTBEDS 4-7
 SOCKS 8-15
 CLEAN & CARE 16-20
 HEADWEAR 21
 SLIPPERS 22-23
 LEATHER GOODS 24-28
 MISCELLANEOUS 29-32
 MERCHANDISING 33
 ORDERING 34
 INDEX 35

MERINO MEDIUM CREW



-  **97325** Brown
-  **97326** Olive
-  **97329** Charcoal
-  **97328** Navy

97327
Taupe



Content: 80% Merino Wool, 18% Nylon, 2% Lycra® Spandex
Sizes: 6-9, 9-12, 12-16
Unit: 6 pair



TRAIL ANKLE

97356: Natural
Content: 30% Merino Wool, 30% Recycled Polyester, 38% Nylon, 2% Lycra® Spandex
Sizes: 6-9, 9-12, 12-16
Unit: 6 pair

- Mesh panels promote air movement
- Moisture wicking
- Durable reinforced heel & toe w/loop toe seam

Height/Cushion:



TRAIL QUARTER

97357: Natural
Content: 30% Merino Wool, 18% Acrylic, 12% Polyester, 38% Nylon, 2% Lycra® Spandex
Sizes: 6-9, 9-12, 12-16
Unit: 6 pair

- Arch support panel reduces foot fatigue
- Moisture wicking
- Mesh panels promote air movement

Height/Cushion:



MERINO LIGHT CREW

97352: Brown (shown), **97353:** Navy, **97354:** Charcoal
Content: 78% Merino Wool, 20% Nylon, 2% Lycra® Spandex
Sizes: 6-9, 9-12, 12-16
Unit: 6 pair

- Arch support panel reduces foot fatigue
- Moisture wicking
- Durable reinforced heel & toe w/flat toe seam

Height/Cushion:



MERINO WOOL CASUAL

97275: Black (shown), **97276:** Khaki, **97277:** Brown, **97278:** Charcoal
Content: 33% Merino Wool, 32% Nylon, 33% Polyester, 2% Lycra® Spandex
Sizes: 6-9, 9-12, 12-16
Unit: 6 pair

- Casual year-round comfort
- Moisture wicking
- Arch support panel reduces foot fatigue

Height/Cushion:





NARROW RIB HIKER

97355: Charcoal
Content: 53% Merino Wool, 26% Acrylic, 19% Nylon, 2% Lycra® Spandex
Sizes: 6-9, 9-12, 12-16
Unit: 6 pair

- Arch support panel reduces foot fatigue
- Moisture wicking
- Ideal for hiking, backpacking or work

Height/Cushion:



CLASSIC RIB

97350: Black (shown), **97351:** Khaki
Content: 71% Merino Wool, 27% Nylon, 2% Lycra® Spandex
Sizes: 9-12, 12-16
Unit: 6 pair

- Micro loop cushioning for casual work comfort
- Durable reinforced heel & toe
- Loop toe seam for best comfort around toe

Height/Cushion:



CLASSIC MERINO

97392: Burgundy and Taupe
Content: 70% Merino Wool, 30% Nylon
Sizes: 6-9, 9-12, 12-16
Unit: 6 pair

- Extra padded for increased comfort in shins
- Arch support panel reduces foot fatigue
- Wide top band keeps sock in place

Height/Cushion:



ECP™ MERINO WOOL

97320: Charcoal (shown), **97321:** Green, **97322:** Brown
Content: 52% Merino Wool, 40% Acrylic, 8% Stretch Nylon
Sizes: 9-12, 12-16
Unit: 6 pair

- Extreme cold protection
- Moisture wicking
- Loop toe seam for best comfort

Height/Cushion:



DELUXE WOOL CREW

97312: Natural (shown), **97313:** Black
Content: 90% Worsted Wool, 10% Stretch Nylon
Sizes: 6-9, 9-12, 12-16
Unit: 6 pair

- Strategic cushioning for safety toe footwear
- Excellent for cooler temperatures
- Reinforced heel & toe add durability

Height/Cushion:



TERRI THERM TUBE

97215: Natural (shown), **97319:** Black
Content: 50% Wool, 35% Acrylic, 15% Stretch Nylon
Sizes: 6-12, 12-16
Unit: 12 pair

- Cushioned comfort tube sock
- Moisture wicking
- Large loops provide ultimate softness & comfort

Height/Cushion:



ARCTIC

97200: Multi
Content: 84% Wool, 9% Acrylic, 5% Nylon, 2% Lycra® Spandex
Sizes: 9-12, 12-16
Unit: 6 pair

- Cushioned warmth
- Flat-knit toe seam
- Large loops provide ultimate softness & comfort

Height/Cushion:



DUO THERM

97220: Gray with Red accent
Content: 85% Worsted Wool, 15% Stretch Nylon
Sizes: 9-12, 12-16
Unit: 6 pair

- Cushioned warmth
- Flat-knit toe seam
- Reinforced heel & toe add durability

Height/Cushion:



ACRYLIC

Acrylic is a group of synthetic fibers designed to wick moisture away and provide superior cushioning. Acrylic has excellent resiliency. It is colorfast, soft, easy to care for and does not cause itching. The Acrylic category includes socks made with acrylic fibers blended with other fibers such as cotton or wool.

SOCK SIZE CHART

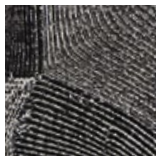
Men's	Women's
3-6	4-6.5
6-9	7-10
9-12	10-13
12-15	N/A

INTRODUCING A NEW LINE OF SAFETY TOE SOCKS...

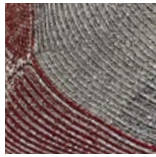
Red Wing offers a complete line of purpose built socks, all strategically designed to enhance the performance of our work boots. From full heel-to-toe cushioning to added arch support, these socks deliver the comfort, durability and fit today's workers need inside a pair of safety toe boots. And these socks come with a Lifetime Guarantee*.

* See packaging for details on Lifetime Guarantee

SAFETY TOE CREW



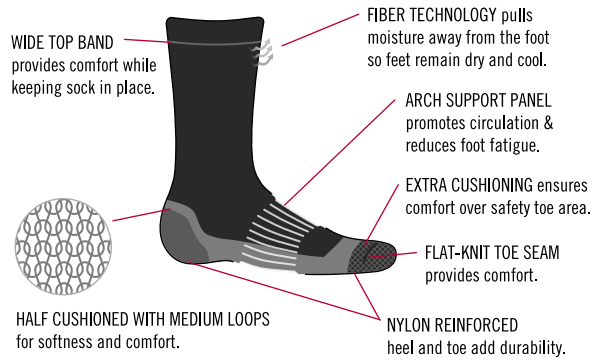
NEW 97298
Black



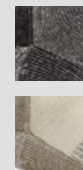
NEW 97289
Gray/Red

NEW 97297
Natural/Brown

97297: Natural/Brown **97289:** Gray/Red **97298:** Black
Content: 57% Acrylic, 20% Merino Wool, 15% Nylon, 7% Polyester, 1% Lycra
Sizes: 3-6, 6-9, 9-12, 12-16 **Unit:** 6 pair



SAFETY TOE QUARTER CREW



NEW 97204: Gray/Red
NEW 97206: Natural/Brown **NEW 97231:** Black
Content: 57% Acrylic, 20% Merino Wool, 15% Nylon, 7% Polyester, 1% Lycra
Sizes: 3-6, 6-9, 9-12, 12-16
Unit: 6 pair

- Arch support panel reduces foot fatigue
- Moisture wicking
- Additional cushion-wrapped toe for comfort when wearing safety toe boots.

Height/Cushion:



WICK DRY CREW

97315: Natural
Content: 68% Duraspun® Acrylic, 18% Nylon, 13% Cotton, 1% Lycra® Spandex
Sizes: 6-9, 9-12, 12-16
Unit: 6 pair

- Wide top band keeps sock in place
- Moisture wicking
- Loop toe seam for best comfort

Height/Cushion:



WICK DRY QUARTER CREW

97316: Natural
Content: 68% Duraspun® Acrylic, 18% Nylon, 13% Cotton, 1% Lycra® Spandex
Sizes: 6-9, 9-12, 12-16
Unit: 6 pair

- Wide top band keeps sock in place
- Moisture wicking
- Loop toe seam for best comfort

Height/Cushion:





WORK THERMAL

97290: Gray with Black accent
Content: 50% Acrylic, 30% Wool, 20% Stretch Nylon
Sizes: 6-9, 9-12, 12-16
Unit: 6 pair

- Flat-knit toe seam
- Moisture wicking
- Large loops provide ultimate softness & comfort



EAGLE POLYWICK

97224: Gray with Burgundy accent
Content: 68% Acrylic, 17% Wool, 14% Nylon, 1% Lycra® Spandex
Sizes: 6-9, 9-12, 12-16
Unit: 6 pair

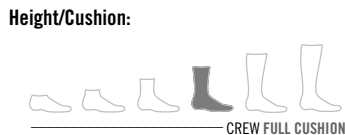
- Durable reinforced heel & toe w/flat toe seam
- Moisture wicking
- Large loops provide ultimate softness & comfort



MOISTURE WICK CREW

97310: Black
Content: 60% Acrylic, 22% Cotton, 15% Nylon, 3% Lycra® Spandex
Sizes: 6-9, 9-12, 12-16
Unit: 6 pair

- Medium terry loops cushion the foot
- Moisture wicking



MOISTURE WICK QUARTER CREW

97311: Black
Content: 60% Acrylic, 22% Cotton, 15% Nylon, 3% Lycra® Spandex
Sizes: 6-9, 9-12, 12-16
Unit: 6 pair

- Flat-knit toe seam
- Moisture wicking



CLIMATE CONTROL COLD

97208: Gray
Content: 50% Duraspun® Acrylic, 24% Wool, 20% Stretch Nylon, 5% Silk, 1% Lycra® Spandex
Sizes: 6-9, 9-12, 12-16
Unit: 6 pair

- Flat-knit toe seam
- Moisture wicking
- Large loops provide ultimate softness & comfort



CLIMATE CONTROL WARM

97207: Natural
Content: 65% Duraspun® Acrylic, 18% Cotton, 16% Stretch Nylon, 1% Lycra® Spandex
Sizes: 6-9, 9-12, 12-16
Unit: 6 pair

- Flat-knit toe seam
- Moisture wicking
- Large loops provide ultimate softness & comfort



DRI FOOT

97222: White with Burgundy accent
Content: 80% Hi-Bulk Acrylic, 10% Cotton, 10% Stretch Nylon
Sizes: 6-9, 9-12, 12-16
Unit: 6 pair

- Durable reinforced heel & toe w/flat toe seam
- Moisture wicking
- Large loops provide ultimate softness & comfort



SOCK SIZE CHART	
Men's	Women's
3-6	4-6.5
6-9	7-10
9-12	10-13
12-15	N/A

COTTON

The Cotton category includes socks made with either regular or combed cotton. Cotton is a natural, durable fiber.

Red Wing has improved our cotton sock line by including technology that will make them anti-fungal and anti-bacterial. They are treated with an EPA registered, tested, long acting, non-leaching technology that makes them anti-fungal and anti-bacterial. Applied in the manufacturing dye bath/wash process, this micro-biostatic antimicrobial coating creates a protective surface by forming a nano-bed of spikes that disrupt the microorganism's membrane, resulting in the loss of energy in the microbe and its demise. Testing results indicate this treatment has survived 100+ laundries, which may exceed the anticipated life expectancy of any cotton sock.

**The Cotton Supreme has NOT been treated. (already contains wicking polyester fibers).*

CUSHION CREW

97339: White (shown), **97340:** Black
Content: 60% Cotton, 15% Akwatek™, 23% Stretch Nylon, 2% Lycra®
Sizes: 6-9, 9-12, 12-16
Unit: 12 pair

- Strategic cushioning designed for use with safety toe footwear
- Moisture wicking
- Durable reinforced heel & toe

Height/Cushion:



COTTON CUSHION

97203: Natural (shown), **97240:** White, **97244:** Navy, **97246:** Black
Content: 85% Cotton, 15% Stretch Nylon,
Sizes: 6-9 (No Navy), 9-12, 12-16
Unit: 12 pair

- Multi-purpose cushioned comfort
- Reinforced heel & toe
- Colorfast fibers keep socks looking great

Height/Cushion:



COTTON SUPREME*

97260: White
Content: 77% Cotton, 18% Sorbtek® Polyester, 5% Lycra® Spandex
Sizes: 6-9, 9-12, 12-16
Unit: 12 pair

- Arch support panel reduces foot fatigue
- Moisture wicking
- Durable reinforced heel & toe

Height/Cushion:



ALSO AVAILABLE: **97225:** White (3 pr carton) **Sizes:** 9-12 **Unit:** 12 pair
97258: White (6 pr bulk pack) **Sizes:** 9-12 **Unit:** 15 dozen

COTTON QUARTER

97318: White
Content: 84% Cotton, 15% Polyester, 1% Lycra® Spandex
Sizes: 6-9, 9-12, 12-16
Unit: 6 pair

- Cushioned athletic
- Durable reinforced heel & toe
- Snug-fitting low profile top band

Height/Cushion:



COTTON CREW

97228: White (shown), **97229:** Black
Content: 85% Cotton, 15% Stretch Nylon
Sizes: 6-9, 9-12, 12-16
Unit: 6 pair

- Value cotton sold in 6 pair Bulk Pack Bag
- Flat-knit toe seam
- Durable reinforced heel & toe

Height/Cushion:



COMFORT CUSHION

97205: White (shown), **97223:** Black
Content: 70% Combed Cotton, 25% Stretch Nylon, 5% Lycra®
Sizes: 6-9, 9-12, 12-16
Unit: 12 pair

- Arch support panel reduces foot fatigue
- Ultra-soft combed cotton
- Durable reinforced heel & toe

Height/Cushion:



COTTON WORK THERMAL

97221: White with Black accent
Content: 80% Cotton, 10% Acrylic, 10% Stretch Nylon
Sizes: 6-9, 9-12, 12-16
Unit: 6 pair

- Large loops provide ultimate softness & comfort
- Flat-knit toe seam
- Durable reinforced heel & toe

Height/Cushion:





COTTON SUPER TUBE

97241: White
Content: 55% Cotton, 30% Acrylic, 15% Stretch Nylon
Sizes: 12-16 (KING over-the-calf)
Unit: 12 pair
 • Nylon reinforced heel and toe
 • Moisture wicking
 • Flat-knit toe seam
Height/Cushion:



COTTON DOUBLE BOOT

97239: Natural
Content: 85% Cotton, 15% Stretch Nylon
Sizes: 9-12, 12-16
Unit: 6 pair
 • Super spandex increases circulation
 • Reduces muscle fatigue
 • Extra length fold-over doubles cushion
Height/Cushion:



MEN'S DIAMOND PATTERN DRESS

97280: Black (shown), **97281:** Khaki, **97282:** Brown, **97284:** Charcoal
Content: 70% Combed Cotton, 26% Nylon, 4% Lycra® Spandex
Sizes: 6-9, 9-12, 12-16
Unit: 6 pair
 • Ideal for office or uniform
 • Ultra-soft combed cotton
Height/Cushion:



COTTON TUBE

97250: Gray, **97253:** Black, **97255:** White (shown)
Sizes: 6-12 (mid calf) **Unit:** 12 pair
97251: Gray, **97254:** Black, **97257:** White
Sizes: 12-16 (KING over-the-calf) **Unit:** 12 pair
Content: 85% Cotton, 15% Stretch Nylon
 • Medium terry loops cushion the foot
Height/Cushion:



ALSO AVAILABLE: **97256:** White (6 pr bulk pack) **Sizes:** 9-12 **Unit:** 15 dozen



WOMEN'S HALF CREW

97218: White
Content: 72% Combed Cotton, 14% Nylon, 11% Lycra®, 3% Polyester
Sizes: 6-9, 9-12
Unit: 12 pair
 • Light-weight athletic styling
 • Flat-knit toe seam
Height/Cushion:



WOMEN'S MESH PED

97217: White
Content: 80% Cotton, 15% Nylon, 5% Lycra®
Sizes: 6-9, 9-12
Unit: 12 pair
 • Mesh panel on top provides air movement
 • Athletic low-styling for a no-socks look
 • Flat-knit toe seam
Height/Cushion:



WOMEN'S COMFORT CUSHION

97344: Navy (shown), **97345:** Brown, **97346:** Olive
Content: 70% Combed Cotton, 25% Stretch Nylon, 5% Lycra®
Sizes: 6-9, 9-12, 12-16
Unit: 6 pair
 • Arch support panel reduces foot fatigue
 • Flat-knit toe seam
 • Nylon reinforced heel & toe add durability
Height/Cushion:



WOMEN'S DELUXE CREW

97219: White
Content: 72% Combed Cotton, 14% Nylon, 11% Lycra®, 3% Polyester
Sizes: 6-9, 9-12
Unit: 12 pair
 • Arch support panel reduces foot fatigue
 • Moisture wicking
 • Double padded cushioning on bottom
Height/Cushion:



SPECIALTY

Socks included in the Specialty category have fibers that make them unique for their purpose, such as COOLMAX®, ModAcrylic and Bamboo Rayon.

SOCK SIZE CHART	
Men's	Women's
3-6	4-6.5
6-9	7-10
9-12	10-13
12-15	N/A

COOLMAX® possesses a unique four-channel construction with 20% more surface area than other moisture-wicking materials. This allows the fibers to quickly pull moisture away so perspiration evaporates faster and feet stay cool.

ModAcrylic fibers are flame retardant and do not combust. Difficult to ignite, these fibers self-extinguish and are durable like wool.

Bamboo Rayon is manufactured from regenerated cellulose fibers found in bamboo, making this rayon material luxuriously soft.



ULTIMATE DIABETIC

97230: White (shown), **97232:** Black


Content: 60% COOLMAX®, 30% Nylon, 5% Polyester, 4% X-Static®, 1% Lycra® 3D™

Sizes: 6-9, 9-12, 12-16

Unit: 6 pair

- Designed for diabetics & promotes health
- Moisture wicking with COOLMAX®
- Wide top band keeps sock in place

Height/Cushion:



CREW HALF CUSHION



FLAME RETARDANT

97314: Black

Content: 85% ModAcrylic, 13% Nylon, 2% Lycra® Spandex

Sizes: 6-9, 12-16


Unit: 6 pair

- Made with self-extinguishing ModAcrylic
- Arch support panel reduces foot fatigue
- Durable reinforced heel & toe w/loop toe seam

Height/Cushion:



MID CALF FULL CUSHION



COOLMAX® LINERS

97247: White


Content: 93% COOLMAX® Polyester, 6% Nylon, 1% Lycra® Spandex

Sizes: 6-9, 9-12, 12-16

Unit: 12 pair

- Layer for warmth
- Moisture wicking with COOLMAX®
- Flat-knit toe seam

Height/Cushion:



CREW NON CUSHION



POLYPRO LINERS

97248: Black

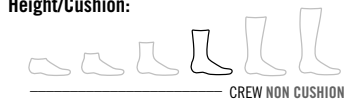
Content: 92% Polypropylene, 5% Nylon, 3% Lycra® Spandex

Sizes: 6-9, 9-12, 12-16


Unit: 12 pair

- Layer for warmth
- Moisture wicking
- Flat-knit toe seam

Height/Cushion:



CREW NON CUSHION



COOLMAX® QUARTER

97317: White


Content: 81% COOLMAX® Acrylic, 17% Nylon, 2% Lycra® Spandex

Sizes: 6-9, 9-12, 12-16

Unit: 6 pair

- Arch support panel reduces foot fatigue
- Moisture wicking with COOLMAX®
- Mesh panels promote air movement

Height/Cushion:



QUARTER CREW HALF CUSHION



WOMEN'S BAMBOO TROUSER

97347: White (shown), **97348:** Black, **97349:** Navy

Content: 70% Bamboo Rayon, 29% Stretch Nylon, 1% Lycra® Spandex

Sizes: 6-9, 9-12

Unit: 6 pair

- Ideal for office or uniform wear
- Wide top band keeps sock in place
- Ultra-soft Bamboo Rayon provides luxurious feel

Height/Cushion:



OVER THE CALF NON CUSHION

- FOOTBEDS 4-7
- SOCKS 8-15
- CLEAN & CARE 18-20
- HEADWEAR 21
- SLEPPERS 22-23
- LEATHER GOODS 24-28
- MISCELLANEOUS 29-32
- MERCHANDISING 33
- ORDERING 34
- INDEX 35

A LITTLE CARE GOES A LONG WAY...

BEFORE  AFTER

CARE PRODUCTS

Without the proper maintenance, boots will show signs of wear. Red Wing offers solutions to help revitalize dry, cracked leather and extend the life of a favorite pair of boots.

SAFE FOR THESE LEATHERS

✓ OIL-TANNED	SUEDE/NUBUCK
✓ DRY-TANNED	WATERPROOF

Each product uses a chart noting the type of leather it is safe to use on. This information is also included on every package to ensure customers get the best performance for the boots they own.

QUICK FACTS

- Paste formula is simply liquid formula with additional wax added.
- Any paste formula should be hand-rubbed to melt wax for best results.
- Any liquid formula will darken leather slightly more than paste formula.



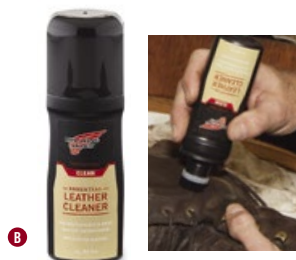
JUST 3 EASY STEPS... 1 CLEAN 2 CONDITION 3 PROTECT

Favorite boots are like the engine of a prized vehicle. Take proper care of them, provide the right maintenance, and they'll deliver superior performance down the road. Clean, condition, protect and repeat is the ideal plan of action to keep boots soft, supple, looking great and performing at their best. So when it comes to the crucial products in this maintenance and revitalizing routine, trust Red Wing Shoes.

CLEAN

ESSENTIAL

A well-prepped, clean surface enhances a customer's success when applying conditioners and protectants to their footwear. Our Essential cleaning products are the first line of defense to ensuring the longevity of your customer's investment.



A Essential Leather Cleaner is now available in a gallon. All gallon containers include leather recommendations and other important information conveniently located on the side panel.

B The new ergonomically-shaped, 3 oz. bottle includes a brush applicator.

- A 95156 ESSENTIAL LEATHER CLEANER**
Unit: 1 gallon
- B 95139 ESSENTIAL LEATHER CLEANER with Brush Applicator**
Unit: (24) 3 oz bottles
- Softens and lubricates
- Adds length to the life of leather
- Protects and preserves leather

SAFE FOR THESE LEATHERS	
<input checked="" type="checkbox"/> OIL-TANNED	<input checked="" type="checkbox"/> SUEDE/NUBUCK
<input checked="" type="checkbox"/> DRY-TANNED	<input checked="" type="checkbox"/> WATERPROOF



- 95166 ESSENTIAL SUEDE/NUBUCK KIT**
Unit: 12 per case
- Includes brush and suede bar
 - Will not change color or texture of suede
 - Non-toxic and easy to use

SAFE FOR THESE LEATHERS	
<input checked="" type="checkbox"/> OIL-TANNED	<input checked="" type="checkbox"/> SUEDE/NUBUCK
<input checked="" type="checkbox"/> DRY-TANNED	<input checked="" type="checkbox"/> WATERPROOF



- 95136 ESSENTIAL SADDLE SOAP**
Unit: (12) 3 oz tins
- Cleans and softens leather
 - Renews appearance
 - Maintains suppleness and strength

SAFE FOR THESE LEATHERS	
<input checked="" type="checkbox"/> OIL-TANNED	<input checked="" type="checkbox"/> SUEDE/NUBUCK
<input checked="" type="checkbox"/> DRY-TANNED	<input checked="" type="checkbox"/> WATERPROOF

CONDITION



NaturSeal® is the most versatile conditioning product RWSC offers.

For customers who want the best performer for conditioning their leather boots - NaturSeal™ is the perfect choice. NaturSeal™ leading-edge conditioning formula uses breakthrough technology to penetrate waterproof leather, enhancing breathability and pliability.

- A 95148 NATURSEAL™ PASTE FORMULA**
Unit: (12) 8 oz containers
- B 95145 NATURSEAL™ PASTE FORMULA NEW**
Unit: (12) 4 oz containers
- C 95144 NATURSEAL™ LIQUID FORMULA NEW**
Unit: (12) 4 oz bottles
- D 95147 NATURSEAL™ LIQUID FORMULA**
Unit: (12) 8 oz bottles
- E 95146 NATURSEAL™ LIQUID FORMULA**
Unit: 1 gallon

- Penetrates waterproof leather
- Adds water repellency to non-waterproof leathers

SAFE FOR THESE LEATHERS	
<input checked="" type="checkbox"/> OIL-TANNED	<input checked="" type="checkbox"/> SUEDE/NUBUCK
<input checked="" type="checkbox"/> DRY-TANNED	<input checked="" type="checkbox"/> WATERPROOF

Some darkening of leather will occur. Will darken and flatten the nap on suede leather. For fine leathers, try on a hidden spot first.



95153 NATURSEAL™ REFILL BOTTLE (empty)
Unit: (12) 16 oz container

Conveniently designed for customer use, the NaturSeal™ refill bottle includes a NaturSeal™ label and dauber. The larger 16-ounce size is perfect for refilling yourself and reselling to your customer.

The ORIGINAL



The Original Boot Paste uses the same formula as the Original Boot Oil, we've simply added wax to provide a paste form to suit you or your customer's preference.

The Original category of conditioning products features a tried-and-true formula that customers have been using since 1958. These products help consumers restore leather to its original condition. The proven formula softens, lubricates, and preserves leather quality.

- A 95141 ORIGINAL BOOT PASTE**
(formerly known as Leather Conditioner)
Unit: (24) 7 oz tins
- B 95126 ORIGINAL BOOT PASTE - Black**
(formerly known as Black Leather Conditioner)
Unit: (24) 3 oz tins
- C 95150 ORIGINAL BOOT OIL**
Unit: 1 gallon container
- D 95151 ORIGINAL BOOT OIL**
Unit: (12) 32 fluid oz containers
- E 95130 ORIGINAL BOOT OIL**
Unit: (24) 8 fluid oz bottles

- Restores dried-out leather to its natural softness and flexibility
- Adds water repellency to leather

SAFE FOR THESE LEATHERS	
<input checked="" type="checkbox"/> OIL-TANNED	<input checked="" type="checkbox"/> SUEDE/NUBUCK
<input checked="" type="checkbox"/> DRY-TANNED	<input checked="" type="checkbox"/> WATERPROOF



95152 ORIGINAL BOOT OIL REFILL BOTTLE (empty)
Unit: (12) 16 oz containers

Conveniently designed for customer use, the Original Boot Oil refill bottle includes an Original Boot Oil label and dauber. The larger 20-ounce size is perfect for refilling yourself and reselling to your customer.



- B 95157 ORIGINAL MINK OIL PASTE**
Unit: (1) 32 oz containers
- H 95160 ORIGINAL MINK OIL PASTE**
Unit: (24) 3 oz tin

- Trusted silicone and lanolin formula softens leather
- Adds water repellency to leather

SAFE FOR THESE LEATHERS	
<input checked="" type="checkbox"/> OIL-TANNED	<input checked="" type="checkbox"/> SUEDE/NUBUCK
<input checked="" type="checkbox"/> DRY-TANNED	<input checked="" type="checkbox"/> WATERPROOF



- I 95137 ORIGINAL BOOT OIL TRIAL SIZE**
Unit: (50) .24 oz packets
- J 95138 ORIGINAL MINK OIL TRIAL SIZE**
Unit: (50) .24 oz packets

The new trial size packets of the Original Boot and Mink Oil Paste are a convenient way to send a sample with your customers.

CONDITION

All Natural

All Natural conditioning products include a proprietary mixture of mink oil, pine pitch and beeswax. Designed to protect and extend the life of oil-tanned leather, these products offer an all-natural, non-chemical makeup.



A 95143 ALL NATURAL BOOT PASTE
(formerly known as All Natural Leather Dressing)
Unit: (12) 8 oz tin

- Silicone and petroleum free
- Adds water repellency to leather
- Gives light-colored leathers a slightly darker, richer color

B 95132 ALL NATURAL BOOT OIL
Unit: (12) 8 oz containers

- Silicone and petroleum free
- Prevents drying and cracking by replenishing natural oils

SAFE FOR THESE LEATHERS	
<input checked="" type="checkbox"/> OIL-TANNED	<input type="checkbox"/> SUEDE/NUBUCK
<input type="checkbox"/> DRY-TANNED	<input type="checkbox"/> WATERPROOF

ESSENTIAL



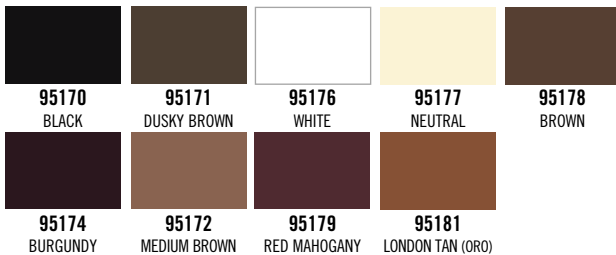
A 95159 ESSENTIAL BOOT POLISH - Black
(formerly known as Shoe Cream)
Unit: (1) 32 oz jars

B 95158 ESSENTIAL BOOT POLISH - Brown
(formerly known as Shoe Cream)
Unit: (1) 32 oz jars

C ESSENTIAL BOOT POLISH
all colors/numbers shown below
(formerly known as Shoe Cream)
Unit: (12) 1.55 oz jars

- Replenishes leather color

SAFE FOR THESE LEATHERS	
<input type="checkbox"/> OIL-TANNED	<input type="checkbox"/> SUEDE/NUBUCK
<input checked="" type="checkbox"/> DRY-TANNED	<input type="checkbox"/> WATERPROOF



D 95131 ESSENTIAL PASTE WAX - Brown
Unit: (12) 3 oz tins

E 95127 ESSENTIAL PASTE WAX - Black
Unit: (12) 3 oz tins

- Renews leather with shine
- Aids in water repellency

SAFE FOR THESE LEATHERS	
<input type="checkbox"/> OIL-TANNED	<input type="checkbox"/> SUEDE/NUBUCK
<input checked="" type="checkbox"/> DRY-TANNED	<input type="checkbox"/> WATERPROOF



Applying Conditioners

Whether you are using conditioning products in your store or selling them to customers, our premium 100% natural horsehair brush and polish dauber are essential tools in the process. They ensure a deep and even finish when applying conditioning products.

F 95165 ESSENTIAL POLISH DAUBER
Unit: (24) 4" L x 1½" W

- Sized to fit our boot polish jar

G 95164 ESSENTIAL POLISH BRUSH
Unit: (12) 6" L x 2" W

- Solid wood handle
- Excellent for shining leather or light-duty cleaning

PROTECTION

ESSENTIAL



- A 95155 ESSENTIAL SILICONE**
Unit: (1) 1 gallon
- B 95115 ESSENTIAL SILICONE SPRAY**
Unit: (24) 6 oz cans
- C 95110 ESSENTIAL SILICONE**
Unit: (24) 4 oz cans

- Protects leather from water penetration
- Adds water repellency

SAFE FOR THESE LEATHERS	
✓ OIL-TANNED	✓ SUEDE/NUBUCK
✓ DRY-TANNED	✓ WATERPROOF



- 95162 ESSENTIAL LEATHER PROTECTOR**
Unit: (12) 4 oz container

Leather Protector creates an invisible shield for protection of leather and fabric.

- Seals out water, stains and dirt
- Makes leather easier to clean
- Will not darken or change color of leather

SAFE FOR THESE LEATHERS	
✓ OIL-TANNED	✓ SUEDE/NUBUCK
✓ DRY-TANNED	✓ WATERPROOF

PROTECTION AND REPAIR

These products can be used to either prevent wear or repair damaged areas. We offer different options so your customers can choose the method they prefer.



- 95128 TOE ARMOR - Brown**
- 95129 TOE ARMOR - Black**
- Unit: (6) 2 oz. containers

- Provides a layer of durable toe protection
- Environmentally friendly
- Easy clean up
- Cures in 24 hours



- 95124 SHOE GOO**
- Unit: (12) 3.7 fl. oz. tubes

- Superior adhesive and sealant
- Easily and permanently repairs leather, vinyl, rubber, and canvas
- Dries to a waterproof, flexible rubber



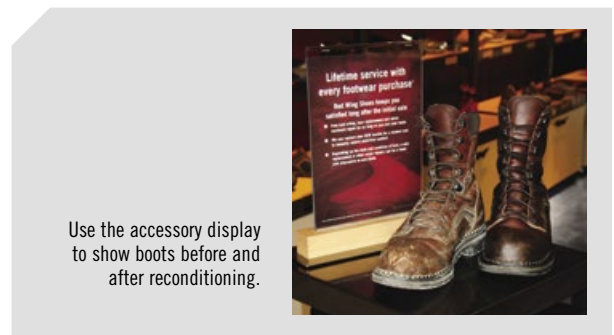
- 95182 BOOT BUMPER - Black**
- 95183 BOOT BUMPER - Dark Brown**
- 95184 BOOT BUMPER - Tan**
- 95185 BOOT BUMPER - Multi-pack display**
- Unit: (12 per case)

- One size fits all
- Designed to protect toe area
- Easy application with formulated glue



- 95133 TUFF TOE - Black**
- 95134 TUFF TOE - Brown**
- Unit: (12) 1.7 fl. oz. containers

- Provides superior toe protection
- Bonds to almost any surface
- Five-minute set up
- Cures in 24 hours



Use the accessory display to show boots before and after reconditioning.

HEADWEAR

Keep Red Wing top of mind for your customers! When it comes to visibility for the brand, caps embellished with the Red Wing logo build brand awareness and elevate brand favorability both on the job site and after hours - resulting in improved profits and increased brand recognition.

KNIT SKULLY CAP



- 97422:** Gray, **97420:** Black, **97421:** White
- Knit fold up cuff skully cap
 - 100% acrylic
 - Red Wing Shoes logo embroidered on front
- Sizes:** One size fits most
Unit: 3 pieces

KNIT RIBBED RADAR CAP



- 97425:** Brown, **97426:** Black
- Heavy rib peak two-by-two ribbed cap with pre-curved short bill
 - 100% acrylic
 - Red Wing Shoes logo embroidered tag on side
- Sizes:** One size fits most
Unit: 3 pieces

FLEECE 1-HOLE BALACLAVA



- 97430:** Black
- Fleece 1-hole face mask with nose ventilation
 - 100% polyfleece
 - Red Wing Shoes logo embroidered on front
- Sizes:** One size fits most
Unit: 3 pieces

KNIT 3-HOLE BALACLAVA



- 97431:** Black
- Knit 3-hole ribbed face mask
 - 100% acrylic
 - Red Wing Shoes logo embroidered on back
- Sizes:** One size fits most
Unit: 3 pieces

KNIT WATCH CAP W/LINING



- 97419:** Black
- Knit fold up cuff watch cap with fleece lining
 - 100% acrylic; 100% polyfleece lining
 - Red Wing Shoes logo embroidered on front
- Sizes:** One size fits most
Unit: 3 pieces

PROFILE CAP 1905



- 97411:** White, **97412:** Black
- Medium profile 6-panel pro-style cap
 - 100% cotton twill
 - EST. 1905 embroidered on the visor
 - Red Wing Shoes logo embroidered on side
- Sizes:** One size fits most
Unit: 3 pieces



Adjustable Velcro® strap

PROFILE CAP



- 97414:** Black, **97413:** White
- Medium profile 6-panel pro-style cap
 - 100% cotton twill
 - Contrast stitching
 - Red Wing Shoes logo embroidered on side
- Sizes:** One size fits most
Unit: 3 pieces



Adjustable Velcro® strap

KNIT TOQUE CAP



- 97424:** Red/Black, **97423:** Charcoal/Black
- Knit low cut toque cap, hand dyed
 - 100% acrylic
 - Red Wing Shoes logo embroidered tag
- Sizes:** One size fits most
Unit: 3 pieces

SLIPPER STYLES FOR FEET THAT ARE OFF THE CLOCK

Legendary Red Wing comfort, craftsmanship and durability isn't reserved solely for our work boots. Our men's and women's slipper selection is purpose built with relaxation in mind.

100% SHEEPSKIN LINING
Naturally wicks away moisture and keeps feet toasty.

NEW MEN'S ALPINE II

97524 Chocolate

Sizes: M 8-16



LEATHER UPPER
Good looks that are built to last.

REMOVABLE 100% SHEEPSKIN INSOLE

DUAL DENSITY RUBBER OUTSOLE
Superb for indoor and outdoor use.

MEN'S LOAFER MOCCASIN

97515: Chestnut 97516: Chocolate

- Cowhide suede leather upper
- 100% sheepskin lining and removable footbed
- Slip-resistant TPR rubber sole

Sizes: 97515: M 8-16 W 10-14
97516: M 8-16



MEN'S LOAFER MOCCASIN

97518: Chestnut

- Cowhide suede leather upper
- Beige cotton terry cloth lining
- Slip-resistant TPR rubber sole

Sizes: M 8-16 W 10-14



MEN'S SCUFF

97519: Chestnut

- Cowhide suede leather upper
- 100% sheepskin lining
- Slip-resistant TPR rubber sole

Sizes: SML, MED, LRG, XLG, XXL



MEN'S ROMEO TRI-PANEL

97517: Chestnut

- Cowhide suede leather upper
- 100% sheepskin lining and removable footbed
- Slip-resistant TPR rubber sole

Sizes: M 8-16 W 10-14





97527: Red



97525: Black



97526: Taupe

NEW WOMEN'S BELLA

- Nubuck leather upper
 - 100% sheepskin lining
 - Rubber sole convenient for outdoor use
- Sizes: M 6-12

WOMEN'S JULIET

- 97522: Chestnut
- Cowhide suede leather upper
 - 100% sheepskin lining and flip-up cuff
 - Slip-resistant TPR rubber sole
- Sizes: M 5-12



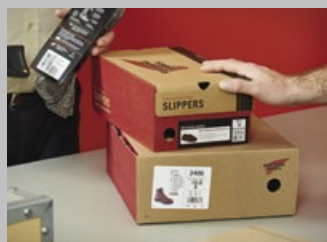
WOMEN'S SCUFF

- 97520: Chestnut 97521: Chocolate
- Cowhide suede leather upper
 - 100% sheepskin lining
 - Slip-resistant TPR rubber sole
- Sizes: SML, MED, LRG, XLG, XXL



SLIPPER SIZE CHART

Sizes	Men's	Women's
Small	7½-8½	5-6
Medium	9-10	6½-7½
Large	10½-11½	8-9
XLarge	12-13	9½-10½
XXLarge	14-15	11-12



Boost profits with add-on sales

Your customers expect high quality products when they visit your store, which is why Red Wing slippers are the perfect fit. Made with superior, silky sheepskin and soft suede leather, Red Wing slippers feature a rugged rubber outsole for indoor and outdoor wear.

LEATHER GOODS

Red Wing knows leather. That's why we have extended the Red Wing brand to include various leather goods - all of which exude exceptional quality and durability that customers have come to expect.

BELTS

Designed for the working man both on and off the job. This assortment of full-grain leather belts in classic work styles complement any footwear. Many of our belts are made using a single piece of leather which makes them very durable. All belts are made in the U.S.A.



NEW 1½" BISON BELT

96509: Brown

- America raised and tanned bison leather
- Two piece construction...buffed split veg. lining leather
- Tone-on-tone stitching
- Zinc nickel/lead free end bar buckle

Sizes: 30"-44"



1½" DISTRESSED

96510 / 96534: Black
96511 / 96535: Brown

- Full-grain, oil-tanned leather from Horween
- Single-ply, flat construction
- Eco brass end bar buckle

Sizes: **96510 / 96511** 30"-44"
96534 / 96535 46"-54"



1¼" BASIC HARNESS

96505 / 96533: Burgundy, **96554:** Brown
96504 / 96519: Black, **96555:** Hardwoods

- Full grain, single ply harness leather
- Flat construction
- Eco brass end bar buckle

Sizes: **96505 / 96554 / 96504 / 96555** 30"-44"
96533 / 96519 46"-54"



1¼" CLASSIC WORKWEAR

96525: Brown
96526: Black

- Full-grain Latigo leather From Mexico
- Feather edge construction, self-lined
- Tone on tone boarder stitching
- Zinc-nickel/lead free end bar buckle

Sizes: 30"-44"



1½" HARNESS

96558: Brown
96559: Black

- Full-grain, oiled nubuck leather
- Flat single-ply construction
- Zinc roller bar/end bar buckle

Sizes: 30"-44"



1¼" FEATHER EDGE

96512: Brown

- Full-grain, oil-tanned leather from Horween
- Feather edge construction
- Contrast boarder stitching
- Stitched down zinc buckle

Sizes: 30"-42"



1½" FLORAL WESTERN

96514: Brown

- Full-grain, oil-tanned leather from Horween
- Flat, single-ply construction w/floral embossing
- Eco brass end bar buckle in sterling silver plate finish

Sizes: 30"-44"



1¼" TIPPED END

96522: Brown
96521: Black

- Full-grain, oil-tanned leather from Horween
- Feather-edged Construction with tone on tone stitching
- Stitched-down eco-brass sterling silver plated buckle and tip set

Sizes: 30"-44"



1½" DOUBLE PRONG

96529: Black
96530: Brown

- Full-grain, oil-tanned leather from Horween
- Single-ply flat construction
- Zinc double prong end bar buckle

Sizes: 30"-44"



1¾" TRIPLE STITCH

96557: Black
96556: Brown

- Full-grain, oiled nubuck leather
- Flat construction with triple boarder stitching
- Eco-brass buckle end bar buckle in sterling silver plate finish

Sizes: 30"-44"



1¾" M1917 STRAP BELT

96517: Brown

- Full-grain, oil tanned leather from Horween
- Single-ply flat construction
- Mechanics' belt, no buckle, double hook system
- Zinc nickel/lead free finish

Sizes: 30"-44"



1½" REVERSIBLE

96515: Black/Brown

- Full-grain, cowhide-plated
- Stitched-down center bar reversible zinc buckle in pewter finish

Sizes: 30"-44"



1½" AMERICAN EAGLE

96513: Brown

- American eagle embossing on natural vegetable tanned leather
- Single-ply flat construction
- Eco-brass end bar buckle

Sizes: 30"-44"



1¼" CLASSIC RANGER

96551: Brown

- Full-grain, oil-tanned leather from Horween
- Classic ranger treatment in F.E construction
- Stitched-down eco brass end bar buckle in polished brass finish

Sizes: 30"-44"

Special Note: Leather Protector should be used to care for all belt styles. Boot Oil and Shoe Creams are only recommended if color is needed. Excessive use of Boot Oil or Shoe Creams may cause belt to stain clothing.



TOWER DISPLAY*

Red Wing Shoes Belt & Accessories Display*

94343 ea. US \$112.50 CAN TOTAL \$121.50
(CAN \$112.50 DUTY \$9.00)

Features:

- Two-sided metal display with adjustable peg hooks allows for easy display of belts and/or other accessories
- Includes two flat bar hang rails, 16 belt hooks, and 24 peg hooks

Dimensions: 24"W x 66"H x 16"D

*Product not included





GLOVES

HEAVY UTILITY™ GLOVES



95242

- Durable synthetic leather
- DuraClad® reinforced palm, fingers, thumb
- Terry cloth sweat-wipe on thumb
- Molded Velcro strap with ID tag
- 100% machine wash able
- 'Built Tough by Ironclad' tag

Sizes: SML, MED, LRG, XLG, XXL
Unit: 3 pair



COLD CONDITION® GLOVES

95244

- Durable synthetic leather
- Waterproof, windproof, breathable lining
- DuPont™ Teflon® treated shell
- Terry cloth sweat-wipe on thumb
- Neoprene cuff with ID tag

Sizes: SML, MED, LRG, XLG, XXL
Unit: 3 pair

GENERAL UTILITY™ GLOVES



95241

- Durable synthetic leather
- Reinforced thumb and saddle
- Terry cloth sweat-wipe on thumb
- Molded Velcro strap with ID tag
- 100% machine washable
- 'Built Tough by Ironclad' tag

Sizes: SML, MED, LRG, XLG, XXL
Unit: 3 pair



WORK CREW™ GLOVES

95240

- Durable synthetic leather
- Reinforced thumb and saddle
- Open cuff design
- 100% machine washable
- 'Built Tough by Ironclad' tag

Sizes: SML, MED, LRG, XLG, XXL
Unit: 3 pair

BUCKSKIN SUEDE GLOVES



95266

- Combination of suede buckskin and Spandex
- Light duty work glove is durable & comfortable
- 3/4" wide adjustable wrist strap helps keep the glove in place
- Red Wings® logo, tabbed at the wrist

Sizes: MED, LRG, XLG

Unit: 3 pair

TUNDRA® GLOVES



95246

- ArmorFlex™ outer shell for extreme protection
- 120 grams Cryoflex® insulation for warmth in the coldest climates
- Duraclad® reinforced EVA accordion knuckle protection
- Kevlar® & Duraclad® reinforcements in critical areas for maximum durability
- Seamless 3-layer waterproof insert
- Gauntlet cuff with hook and loop closure

Sizes: SML, MED, LRG, XLG, XXL

Unit: 3 pair

LEATHER LINED GLOVES



95258: Carmel

- Premium smooth grain leather
- 100 gram 3M™ Thinsulate™ Insulation
- Tailored keystone thumb
- Inside elastic for snug fit
- Red Wing embossed logo

Sizes: MED, LRG, XLG

Unit: 3 pair



RANCHWORX® GLOVES

95243: Black and Gold

Sizes: SML, MED, LRG, XLG, XXL

Unit: 3 pair



Back

Front

SMART PHONE CASE**96568:** Full grain, black leather**96569:** Full grain, brown leather

- Side goring accommodates most smart phones
- Hidden magnetic closure on flap
- 5¾" L x 3½" W

Unit: 6 pack

96569

WALLETS AND CASES

Red Wing wallets and cases feature durable, full-grain leathers and classic construction to provide a safe haven for ID's, credit cards, money or cell phones, both on and off the job.

TRUCKER WALLET WITH CHAIN

- 96574:** Men's genuine aged bark leather
- Trucker construction with stitching
 - 7" L x 3½" W
 - Inside compartments with zippered pouch
 - 1 key slot - 5 card slots
 - 13" polished nickel chain with keeper

Unit: 6 pack**BUSINESS OR CREDIT CARD CASE****96572:** Brown

- Men's genuine aged bark leather
- Card case construction
- 4½" L x 2¾" W
- 2 card slots – money clip on back

Unit: 6 pack**BI-FOLD WALLET**

- 96578:** Men's genuine seidel cheyenne leather
96570: Men's genuine aged bark leather
- Bi-Fold construction w/stitching
 - 4½" L x 3½" W
 - 2 inside slots - 8 card slots
 - Divided compartment for bills

Unit: 6 pack

96578

96570



96579

96571

TRI-FOLD WALLET

- 96579:** Men's genuine seidel cheyenne leather
96571: Men's genuine aged bark leather
- Tri-fold construction w/stitching
 - 4½" L x 3½" W
 - 3 inside slots - 6 card slots
 - Divided compartment for bills

Unit: 6 pack**BACK SAVER WALLET™**

- 96576:** Brown, **96577:** Black
- Unique, patented full-grain leather wallet folds flat to fit in your front pocket
 - Gold-plated clip holds bills securely, and four pockets hold up to 24 cards
 - Recommended by the Congress of Chiropractic State Associations to help eliminate "Wallet Sciatica". Dr. Alan Bonebrake states "Bulky wallets can create misalignment of the sciatic nerves supplying the legs. The Back Saver Wallet™ eliminates these problems because it fits comfortably in your front pocket."

Unit: 6 pack

96577

96576



HIGH VISIBILITY SAFETY VESTS

Silver glass bead reflective material and breathable mesh fluorescent fabrics combine to deliver ANSI 107-compliant high visibility work safety vests you can count on to stay safe on the job site.

NEW STANDARD MESH SAFETY VEST

95102: Orange **95103:** Lime

- Breathable ANSI-compliant polyester mesh fabric (3.3oz)
- 2" ANSI-compliant reflective material
- Two outside front flap pockets
- Inside pocket
- Hook & loop front closure
- Choose lime or orange

Sizes: S/M, L/XL, 2XL/3XL
Units: Each



back

NEW TWO-TONE MESH SAFETY VEST

95104: Orange **95105:** Lime

- Breathable ANSI-compliant polyester mesh fabric (3.3oz)
- 2" ANSI-compliant reflective material
- Reflective material set on 4.5" contrasting color background fabric
- Inside pocket
- Zipper closure
- Choose lime or orange

Sizes: S/M, L/XL, 2XL/3XL
Units: Each



back

Red Wing tag located on the back of vest

Red Wing tag located on the back of vest



COOLING PRODUCTS

From towels to bandanas and other fabric cooling products, we're bringing you a great new selection of workwear that can really take the heat off. The built-in cooling system is activated simply by running it under water. When the work gets hot, these favorites keep their cool.

NEW MICROFIBER COOLING TOOL



95106: Blue / Gray

Dampen microfiber towel to activate cooling or use dry to wipe your brow.

- Microfiber material soft and absorbent
- Super-evaporative, feels significantly colder than ambient air when wet
- Chemical free / Machine washable

Size: 9.8" wide x 40.9" long (25cm x 104cm)
Units: Each



NEW COOLING BANDANA

95108: Stars & Stripes 95109: Blue

Advanced PVA material keeps you cool without the bulk.

- Advanced PVA material activates easily and quickly when run under water for one minute
- Reusable, just re-wet
- Lightweight and low profile; perfect under hard hats
- Tie closure for personal fit
- Machine washable

Sizes: One Size
Units: Each

NEW MULTI-BAND



95107: Stars & Stripes

Supremely versatile performance fabric with a multitude of uses and ways to wear.

- Hi-tech moisture management performance fabrics dry fast
- Anti-stink treatment helps workers remain unscented
- Multi-climate usage blocks wind, sun and dust
- Stretchable, comfortable and seam-free
- Machine washable

Sizes: One size fits most
Units: Each



NEW COOLING TOWEL BAND

95112: Blue

Dampen this synthetic band to create a cooling aid.

- Advanced PVA material holds water without feeling heavy
- Super-evaporative, feels significantly colder than ambient air
- Use as a neck wrap by pulling end of wrap through slit
- Wear for hours, or wipe off for quick relief
- Simply re-wet the towel to activate
- Machine washable

Sizes: 4" W x 29.5" L (10cm x 75cm)
Units: Each

LUNCH COOLERS Round out your product offering with these sturdy, soft-sided canvas lunch coolers.



DELUXE LUNCH COOLER

95005

- Durable soft-side insulated canvas lunch bag with additional zippered drink cooler
- Detachable shoulder strap adjusts to the perfect length to carry over your shoulder

Size: 15" L x 8" W x 9" H
Unit: 6/case



Deluxe cooler keeps beverages at hand with an insulated end pocket to keep them cold

LUNCH COOLER

95004

- Durable soft-side insulated canvas lunch bag
- Detachable shoulder strap adjusts to the perfect length to carry over your shoulder

Size: 11" L x 8" W x 9" H
Unit: 6/case



RED WING LEATHER COASTERS

95006

- S.B. Foot Tanning Co. leather
- 3½" diameter drink coaster
- Embossed Red Wing Shoes logo
- Four coasters tied together with golden taslan lace

Unit: (12) 4-packs



SHOEHORNS These premium shoehorns make slipping into a pair of Red Wing boots effortless.

PRO-FITTER® SHOEHORNS

95188: Brushed Nickel

95189: Brushed Brass

- Premium steel 7½" shoehorn with Red Wing embossed logo
- Antique brushed finish

Unit: 12/case



23-INCH SHOEHORN

95191

- Now available with Red Wing Shoes® screenprinted logo
- Use our extra-long, 23" shoehorn and you'll barely have to bend to get on any type of shoe or boot
- Made with Swedish, high-strength, lightweight metal that won't break or bend
- Powder coating keeps the shoehorn from snagging stockings or socks and helps to slide the heel effortlessly into the shoe

Unit: 12/case





ODOR CHECK® INSERTS

95193

- A moisture and odor control system that dries your footwear overnight
- Requires no batteries, fans, or heat
- Non-toxic and earth friendly

Unit: 12/case



SCRUSHER® WITH BASE

95123

- Leaves dirt outdoors, not on your floors
- Ideal for shoes, boots and sneakers
- Portable base keeps the Scrusher in place when cleaning footwear
- Rubber stops protect floors & prevent slipping
- No assembly required

Unit: 8 pack



RED WING YAKTRAX® WALKER

95190

- Instant confidence and safety in snowy or icy walking conditions
- Made of an injection-molded, thermal plastic elastomer and hand-wound high strength that conforms to the shape of your boot or shoe and is easy to put on and take off
- Provides 360 degrees of traction on packed snow and ice and can be worn in temperatures as low as -41°F

Sizes: XSM (1-4½), SML (5-8½), MED (9-11), LRG (11½-13½)

Unit: 6 pack



RED WING YAKTRAX® PRO

95192

- Confidence and safety in snowy or icy walking conditions
- Made of compression molded natural rubber and hand-wound high strength, abrasion-resistant 1.4mm steel coils, that conforms to the shape of your boot or shoe
- The over boot strap keeps the Yaktrax® PRO secure on your footwear
- Provides 360 degrees of traction on packed snow and ice and can be worn in temps as low as -41°F

Sizes: SML (5-8½), MED (9-11), LRG (11½-13½), XLG (14+)

Unit: 6 pack



RED WING/PEET BOOT DRYER

95116 / 95118

- Safely removes perspiration, wetness and odor overnight from any footwear
- Cool air is pulled in through bottom vents and warmed - warm air rises naturally to circulate through footwear
- Silent thermal convection prevents shoe and boot damage

Unit: 95116 6 pack
95118 12 pack



RED WING SAFETY GLASSES

95220: Dark Gray, 95221: Silver

- Wrap-around Polycarbonate lens offers unobstructed wide-angle viewing
- Lens is made from UV385 Polycarbonate that filters out 99.9% of harmful UV radiation
- Lens is finished with anti-scratch hard coating and added anti-fog advantage
- Specification: ANZI Z87.1 CE EN 166

Unit: 12 each



RED WING DELUXE SAFETY GLASSES

95222: Clear, 95223: Smoke (Gray), 95224: Amber, 95225: Cool I/O Mirror, 95226: Silver Mirror

- Full wrap-around with Curved Polycarbonate lens provides seamless front & side protection, without the distraction normally associated with traditional side shields with defined seams
- Hard-coated Anti-Scratch / Anti-fog lens with UV 385 stabilizer provides 99.9% UV protection
- Black Polycarbonate Frame w/Nylon Temple Tips
- Multi-adjustment system including 5-position lens tilt & 4-position temple length adjustment
- Adjustable PVC nose pad provides comfort and reduces slipping for all day comfort
- Ventilation slots between the frame and lens allow air circulation
- Meet ANSI Z87.1, EN 166-F CE Standards
- Red Wing Shoes logo on both temples

Unit: 12 each



Use the safety eyewear display (94345) by the cash wrap to highlight your selection.

See page 34 for ordering details.





WHAT MAKES A STRONG BRAND?

Experts will tell you that a strong brand creates an emotional connection with customers that is built through experiences. Proper merchandising can improve the buying experience for customers and make featured products more appealing.

Presenting a better buying experience.

Nothing is more frustrating for a customer than struggling to find products or having difficulty choosing the right product when they do. Grouping products together in a logical manner creates the best experience. We also recommend vertical merchandising whenever possible.

What is vertical merchandising?

It means placing merchandise in vertical columns instead of horizontal rows. The advantage is it allows your customers to see the entire product selection at waist level instead of hiding some items on the bottom row. The bottom row can be a death sentence for some products. It also makes it much easier to compare products. So, if a customer is deciding which sock is their best option they don't need to search for each option. They are all represented at the same level. The final reason for vertical merchandising is that it improves the overall appearance and organization of the store. We have intentionally designed our new packaging to have a similar size and shape, so it is easier to merchandise in this highly effective vertical presentation.



HAT DISPLAY

CAPITALIZE ON SPACE WITH MERCHANDISING DISPLAYS

Red Wing accessories displays are designed to maximize your retail selling space while unifying and enhancing the presentation of Red Wing products. Red Wing fixtures are designed to present products in the most compelling way. We've also made sure they function well while looking great. Reference your Red Wing Dealer Support Catalog for more details.



TOWER DISPLAY

RED WING WARRANTY

LIMITED ONE-YEAR WARRANTY AGAINST DEFECTS:

Red Wing branded products and footbeds are warranted against defects in workmanship and materials. If within 6 months of purchase, a defect occurs in a Red Wing branded product or footbed as the result of normal use, Red Wing Brands of America, Inc. ("Red Wing") will repair the defect or exchange the product. If a product defect occurs as the result of normal use within 6 to 12 months after purchase, Red Wing will repair the defect or issue a credit for 50% of the purchase price. If a product defect occurs as the result of normal use 12 months or more after purchase, Red Wing may, at its option, issue a fair and reasonable credit that can be applied to the purchase of Red Wing branded products. The amount of the credit will be determined in the dealer's sole judgment. Product failures caused by excessive or abusive wear conditions do not qualify for exchange or purchase credit. This warranty is available only to the original purchaser and is not transferable. No adjustment will be given

without the original receipt of purchase. You must return your product to the Red Wing Shoe dealer from which the product was purchased.

DISCLAIMER: The limited warranty relating to Red Wing branded products is in lieu of any other express warranty. No agent, employee or representative of Red Wing has any authority to bind Red Wing to any affirmation, representation or warranty concerning Red Wing branded products, except as stated herein. Red Wing shall not be liable for any consequential or incidental damages. This limited product warranty gives you specific legal rights, and you may also have other rights that vary from state to state. Any implied warranties shall be effective for a period not exceeding 12 months from the date of purchase. Some states do not allow manufacturers to impose time limitations on certain implied warranties, so the above limitation may not apply to you. Red Wing Shoe Company does not warrant non-Red Wing branded products. Any warranty on those products is provided by the manufacturer.

30 DAY UNCONDITIONAL COMFORT GUARANTEE

If during the first thirty (30) days immediately following your purchase you are not satisfied with the comfort of your Red Wing branded footwear for whatever reason, Red Wing will refund the purchase price to you, no questions asked, provided you still have your dated receipt of purchase. No adjustment will be given without the original receipt of purchase. You must return your footwear to the Red Wing Shoe dealer from which the footwear was purchased. Only one return per customer.

DISTRIBUTION POLICY

It is the policy of Red Wing Brands of America, Inc. to sell its Red Wing branded products directly to selected retailers for resale at their approved outlets and only to end user customers. This policy also prohibits resale or shipment of Red Wing branded products by a retailer to any other business or location, whether domestic or international that is not an authorized Red Wing branded account. Violation of this distribution policy may result in termination of a retailer's right to sell Red Wing branded products.

ORDERING INFORMATION

Call Toll-Free: 1-800-328-9453
Fax Toll-Free: 1-800-423-7463 or 1-651-385-1262
Email: customer.orders@redwingshoes.com

For all Canada customers:

Call Toll-Free: 1-800-471-8624
Fax Toll-Free: 1-800-423-7463
Email: canada.orders@redwingshoes.com

TERMS & CONDITIONS

1% 15 days. Net 30 days. 12% annual interest on past due accounts (1% per month). Prices are subject to change without notice.

MERCHANDISE RETURNS

DEFECTIVE MERCHANDISE:

Red Wing Brands of America, Inc. ("Red Wing") accepts returns of defective merchandise. There is no prior authorization required. A return merchandise memo must accompany defective merchandise returns. Please provide item number for returned merchandise on the memo. The return merchandise must be shipped prepaid and via the most economical means. Transportation credit will be issued on defective merchandise and prompt credit will be issued on returned defective merchandise deemed defective after inspection.

SHIPPING ERRORS:

Red Wing accepts returns on merchandise that is sent in error. The returned merchandise must be returned to Red Wing within 30 days of delivery. A return merchandise memo must accompany the returned merchandise along with a copy of the invoice or packing slip indicating the returned merchandise. Merchandise returned without a copy of the invoice or packing slip will be sent back to the dealer. The returned merchandise must be shipped prepaid and via the most economical means. Transportation credit will be issued on returned shipping errors and prompt credit will be issued.

SPECIAL ORDERS:

Special order merchandise may be returned within 30 days of delivery. A return merchandise memo must accompany the returned merchandise along with a copy of the invoice or packing slip indicating the returned special order merchandise. Merchandise returned without a copy of the invoice or packing slip will be sent back to the dealer. A \$10 per pair re-stocking fee will be charged on all special orders returned after 30 days.

ALL OTHER RETURNS:

No other merchandise returns will be accepted without prior authorization from your Red Wing or WORX brand ("WORX") sales representative. After authorization is granted, a return merchandise memo must accompany your returned merchandise along with the original packing slip and the return authorization number from your Red Wing or WORX sales representative. Merchandise returned without the return authorization number and the original packing slip will be sent back to the dealer. A \$10 per pair re-stocking fee will be charged on all authorized returns. Dealer Support items may have a higher re-stocking fee.

ALL DEFECTIVE AND NEW MERCHANDISE MUST BE RETURNED TO: Red Wing Brands of America, Inc. | Attn: Returns | 135 Cannon River Ave. | Red Wing, MN 55066

CHANGE NOTICE: We have made every effort to make this catalog accurate. Due to improvement of product performance and availability of materials, there may be specification changes made during the year. Red Wing Brands of America, Inc. reserves the right to discontinue or drop products, sizes, widths or styles without prior notice. Policies, specifications and designs are subject to change without notice. For current warranty information, including return policies, please visit our website at: www.redwingshoes.com/red-wing-shoes-warranty

PRODUCT INDEX

STYLE	DESCRIPTION	PAGE	STYLE	DESCRIPTION	PAGE	STYLE	DESCRIPTION	PAGE	STYLE	DESCRIPTION	PAGE
95004	Lunch Cooler	31	95188	Pro Fitter® Shoe Horn-Nickel	31	96559	1-3/4" Harness	24	97312	Deluxe Wool Crew Sock - Natural	10
95005	Deluxe Lunch Cooler	31	95189	Pro Fitter® Shoe Horn-Brass	31	96568	Black Leather Smart Phone Case	28	97313	Deluxe Wool Crew Sock - Black	10
95006	Red Wing Coasters (4 pack)	31	95190	Yaktrax® Walker	32	96569	Brown Leather Smart Phone Case	28	97314	Flame Retardant Sock - Black	15
95102	Class 2 Mesh Safety Vest-Orange	29	95191	Swedish 23" Shoe Horn	31	96570	Brown Leather Bi-Fold	28	97315	Wick Dry Crew Sock - Natural	11
95103	Class 2 Mesh Safety Vest-Lime	29	95192	Yaktrax® PRO	32	96571	Brown Leather Tri-Fold	28	97316	Wick Dry Qtr Crew Sock - Natural	11
95104	Class 2 Two-Tone Mesh Safety Vest-Org	29	95193	Odor Check® Inserts	32	96572	Brown Leather Card Case	28	97317	Men's Coolmax® Sock Quarter	15
95105	Class 2 Two-Tone Mesh Safety Vest-Lime	29	95220	Safety Glasses- Dark Grey	32	96574	Brown Leather Trucker w/Chain	28	97318	Cotton Quarter Sock - White	13
95106	Microfiber Cooling Tool	30	95221	Safety Glasses-Silver	32	96576	Back Saver Wallet™ Brown	28	97319	Terri-Therm Tube Sock - Black	10
95107	Multi-Band	30	95222	Deluxe Safety Glasses-Clear	32	96577	Back Saver Wallet™ Black	28	97320	ECP™ Merino Sock - Charcoal	10
95108	Cooling Bandana	30	95223	Deluxe Safety Glasses-Smoke	32	96578	Black Leather Bi-Fold	28	97321	ECP™ Merino Sock - Green	10
95109	Cooling Bandana	30	95224	Deluxe Safety Glasses-Amber	32	96579	Black Leather Tri-Fold	28	97322	ECP™ Merino Sock - Brown	10
95110	Essential Silicone - 4 oz.	20	95225	Deluxe Safety Glasses-I/O Mirror	32	97200	Artic	10	97325	Merino Medium Crew Sock - Brown	9
95112	Cooling Towel Band	30	95226	Deluxe Safety Glasses-Silver Mirror	32	97203	Cotton Cushion Sock - Natural	13	97326	Merino Medium Crew Sock - Olive	9
95115	Essential Silicone Spray - 6 oz.	20	95240	WorkCrew™ Gloves	26	97204	Steel Toe Quarter Crew Sock	11	97327	Merino Medium Crew Sock - Taupe	9
95116	Red Wing/PEET Dryer (6 pack)	32	95241	General Utility™ Gloves	26	97205	Comfort Cushion Sock - White	13	97328	Merino Medium Crew Sock - Navy	9
95118	Red Wing/PEET Dryer (12 pack)	32	95242	Heavy Utility™ Gloves	26	97206	Steel Toe Quarter Crew Sock	11	97329	Merino Medium Crew Sock - Charcoal	9
95123	Red Wing Scrusher® w/base	32	95243	Ranchworx® Gloves	25	97207	Climate Control Warm Sock - Nat	12	97339	Cushion Crew Sock - Wht (Safety Toe)	13
95124	ShoeGoo®	20	95244	Cold Condition® Waterproof	26	97208	Climate Control Cold Sock - Gray	12	97340	Cushion Crew Sock - Blk (Safety Toe)	13
95126	Original Black Boot Paste - 3 oz.	18	95246	Tundra®	27	97215	Terri-Therm Tube Sock - Natural	10	97344	Comfort Cushion Sock - Navy	14
95128	Toe Armor™ Brown	20	95258	Leather Lined Gloves- Carmel	27	97217	Women's Mesh Ped Sock	14	97345	Comfort Cushion Sock - Brown	14
95129	Toe Armor™ Black	20	95266	Buckskin Suede Gloves	27	97218	Women's Half Crew Sock	14	97346	Comfort Cushion Sock - Olive	14
95130	Original Boot Oil - 8 oz.	18	96322	Total Contact	6	97219	Women's Deluxe Crew Sock	14	97347	Bamboo Trouser Sock - White	15
95132	All Natural Boot Oil	19	96323	RW Revolution by Powerstep	5	97220	Duo-Therm Sock	10	97348	Bamboo Trouser Sock - Black	15
95133	Tuff Toe™ Black	20	96324	Polyurethane	7	97221	Cotton Work Thermal Sock	13	97349	Bamboo Trouser Sock - Navy	15
95134	Tuff Toe™ Brown	20	96325	King Toe®	7	97222	Dri-Foot Sock	12	97350	Classic Rib Sock - Black	10
95136	Essential Saddle Soap Paste - 3 oz.	18	96326	Polyurethane SD	7	97223	Comfort Cushion Sock - Black	13	97351	Classic Rib Sock - Khaki	10
95137	Original Boot Oil - .24 oz.	18	96327	Flat Comfort	6	97224	Eagle Polywick Sock - Grey	12	97352	Merino Light Crew Sock - Brown	9
95138	Original Mink Oil Paste - .24 oz.	18	96334	Orthotic EVA Sport	5	97225	Cotton Cushion - White - 3 pr. pk.	13	97353	Merino Light Crew Sock - Navy	9
95139	Essential Leather Cleaner - 3 oz.	17	96335	Orthotic Multicork Walker	5	97228	Cotton Crew Sock - White	13	97354	Merino Light Crew Sock - Charcoal	9
95141	Original Boot Paste - 7 oz.	18	96336	Powerstep® Wide Fit Revolution	5	97229	Cotton Crew Sock - Black	13	97355	Narrow Rib Hiker Sock - Charcoal	10
95143	All Natural Boot Paste - 8 oz.	19	96339	Eagle	7	97230	Ultimate Diabetic Sock - White	15	97356	Trail Ankle Sock - Natural/Charcoal	9
95144	Red Wing NaturSeal™ Liquid - 4 oz.	18	96347	Eagle King Toe®	7	97231	Steel Toe Quarter Crew Sock	11	97357	Trail Quarter Sock - Natural/Charcoal	9
95145	Red Wing NaturSeal™ Paste - 4 oz.	18	96368	ComfortForce® (Loden Green)	7	97232	Ultimate Diabetic Sock- Black	15	97392	Classic Merino Sock - Burgundy	10
95146	One Gallon of NaturSeal™	18	96369	ComfortForce® (Burnt Sienna)	7	97239	Cotton Double Boot Natural Sock	14	97411	Profile Cap 1905	21
95147	NaturSeal™ Liquid - 8 oz.	18	96381	FoamTech™ SD	7	97240	Cotton Cushion Sock - White	13	97412	Profile Cap 1905	21
95148	NaturSeal™ Paste - 8 oz.	18	96386	Custom Comfort Moldable by Sole	4	97241	Cotton Super Tube Sock - White	14	97413	Profile Cap	21
95150	Original Boot Oil - 1 gallon	18	96388	RedBed™	6	97244	Cotton Cushion Sock - Navy	13	97414	Profile Cap	21
95151	Original Boot Oil - 32 oz.	18	96504	1-1/4" Basic Harness	24	97246	Cotton Cushion Sock - Black	13	97419	Knit Watch Cap w/lining	21
95152	Original Boot Oil Can w/Brush	18	96505	1-1/4" Basic Harness	24	97247	Wick Dry Coolmax® Liner - White	15	97420	Knit Skully Cap	21
95153	NaturSeal™ Can w/Brush	18	96509	1-1/2" Bison Belt	24	97248	Polypro Liner Sock - Black	15	97421	Knit Skully Cap	21
95155	Essential Silicone - 1 gallon	20	96510	1-1/2" Distressed	24	97250	Cotton Tube Sock - Grey	14	97422	Knit Skully Cap	21
95156	Essential Leather Cleaner - 1 gallon	17	96511	1-1/2" Distressed	24	97251	Cotton Tube Sock - Grey KING	14	97423	Knit Toque Cap	21
95157	Original Mink Oil Paste - 2 oz.	18	96512	1-1/4" Feather Edge	24	97253	Cotton Tube Sock - Black	14	97424	Knit Toque Cap	21
95158	Essential Shoe Polish, Brn - 32 oz.	19	96513	1-1/2" American Eagle	25	97254	Cotton Tube Sock - Black KING	14	97425	Knit Ribbed Radar Cap	21
95159	Essential Shoe Polish, Blk - 32 oz.	19	96514	1-1/2" Floral Western	24	97255	Cotton Tube Sock - White	14	97426	Knit Ribbed Radar Cap	21
95160	Original Mink Oil Paste - 3 oz.	18	96515	1-1/2" Reversible	25	97256	Cotton Tube Sock - White (Bulk Pk)	14	97430	Fleece 1 Hole Balaclava	21
95162	Essential Leather Protector - 4 oz.	20	96517	1-3/8" M1917 Strap	25	97257	Cotton Tube Sock- White KING	14	97431	Knit 3 Hole Balaclava	21
95164	Essential Polish Brush	19	96519	1-1/4" Basic Harness XL	24	97258	Cotton Cushion Sock - White	13	97515	Men's Loafer Moccasin	22
95165	Essential Polish Dauber	19	96521	1-1/4" Tipped End	25	97260	Cotton Supreme Sock - White	13	97516	Men's Loafer Moccasin	22
95166	Essential Suede/Nubuck Cleaner	17	96522	1-1/4" Tipped End	25	97275	Merino Wool Casual Sock - Black	9	97517	Men's Romeo Tri Panel	22
95170	Essential Shoe Polish, Black	19	96525	1-1/4" Classic Workwear	24	97276	Merino Wool Casual Sock - Khaki	9	97518	Men's Loafer Moccasin	22
95171	Essential Shoe Polish, Dusky Brown	19	96526	1-1/4" Classic Workwear	24	97277	Merino Wool Casual Sock - Brown	9	97519	Men's Scuff	22
95172	Essential Shoe Polish, Medium Brown	19	96529	1-1/2" Double Prong	25	97278	Merino Wool Casual Sock - Charcoal	9	97520	Women's Scuff	23
95174	Essential Shoe Polish, Burgundy	19	96530	1-1/2" Double Prong	25	97280	Diamond Pattern Sock - Black	14	97521	Women's Scuff	23
95176	Essential Shoe Polish, White	19	96533	1-1/4" Basic Harness XL	24	97281	Diamond Pattern Sock - Khaki	14	97522	Women's Juliet	23
95177	Essential Shoe Polish, Neutral	19	96534	1-1/2" Distressed XL	24	97282	Diamond Pattern Sock - Brown	14	97524	Men's Alpine II	22
95178	Essential Shoe Polish, Brown	19	96535	1-1/2" Distressed XL	24	97284	Diamond Pattern Sock - Charcoal	14	97525	Women's Bella	23
95179	Essential Shoe Polish, Red Mahogany	19	96551	1-1/4" Classic Ranger	25	97289	Steel Toe Quarter Sock	11	97526	Women's Bella	23
95181	Essential Shoe Polish, London Tan	19	96554	1-1/4" Basic Harness	24	97290	Wool Work Thermal Sock	12	97527	Women's Bella	23
95182	Boot Bumper™ - Black	20	96555	1-1/4" Hardwood Basic Harness	24	97297	Steel Toe Quarter Sock	11			
95183	Boot Bumper™ - Dk Brown	20	96556	1-3/8" Triple Stitch	25	97298	Steel Toe Quarter Sock	11			
95184	Boot Bumper™ - Tan	20	96557	1-3/8" Triple Stitch	25	97310	Moisture Wick Crew Sock - Black	12			
95185	Boot Bumper™ - Multi Pack	20	96558	1-3/8" Harness	24	97311	Moisture Wick Qtr Crew Sock - Blk	12			

Red style number indicates **NEW** style

FOOTBEDS 4-7
SOCKS 8-15
CLEAN & CARE 16-20
HEADWEAR 21
SLIPPERS 22-23
LEATHER GOODS 24-28
MISCELLANEOUS 29-32
MERCHANDISING 33
ORDERING 34
INDEX 35

PURPOSE BUILT



2016 ACCESSORY CATALOG

RED WING SHOE COMPANY, INC.

314 MAIN STREET RED WING MN 55066
1.800.328.9453 | redwingshoes.com
customer.orders@redwingshoes.com
CANADA ORDERS: 800.471.8624

94084 - Rev 12/15
© 2016 Red Wing Shoe Company, Inc.

